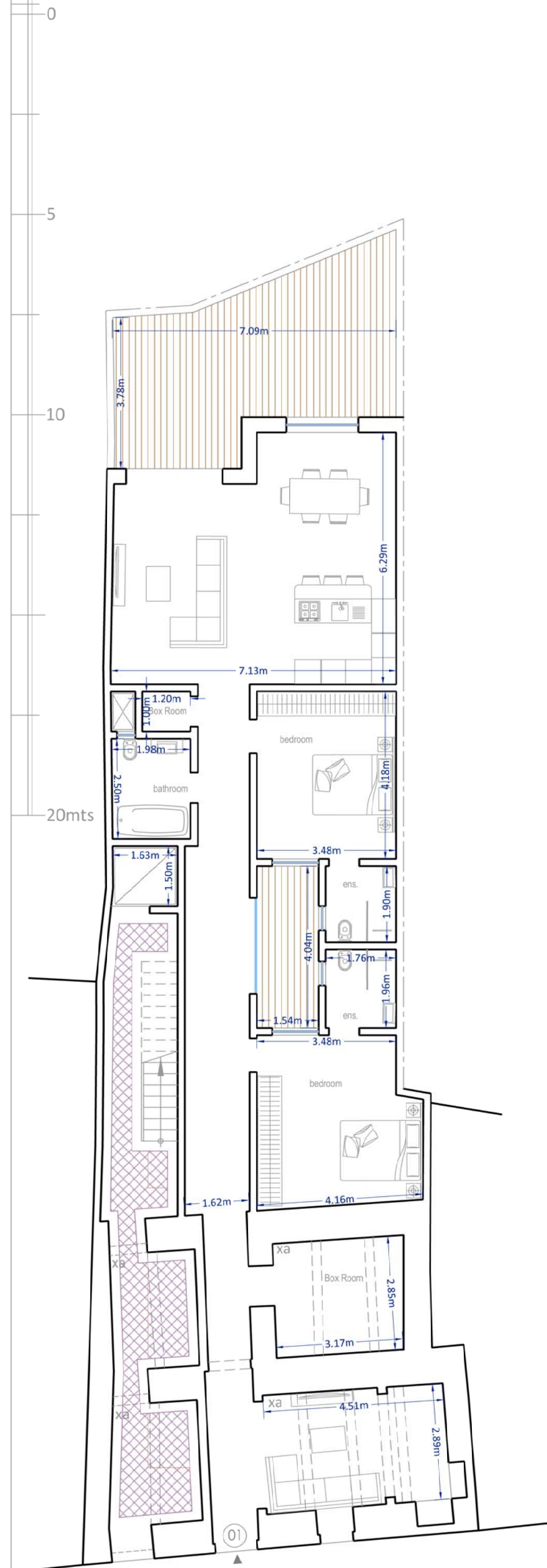


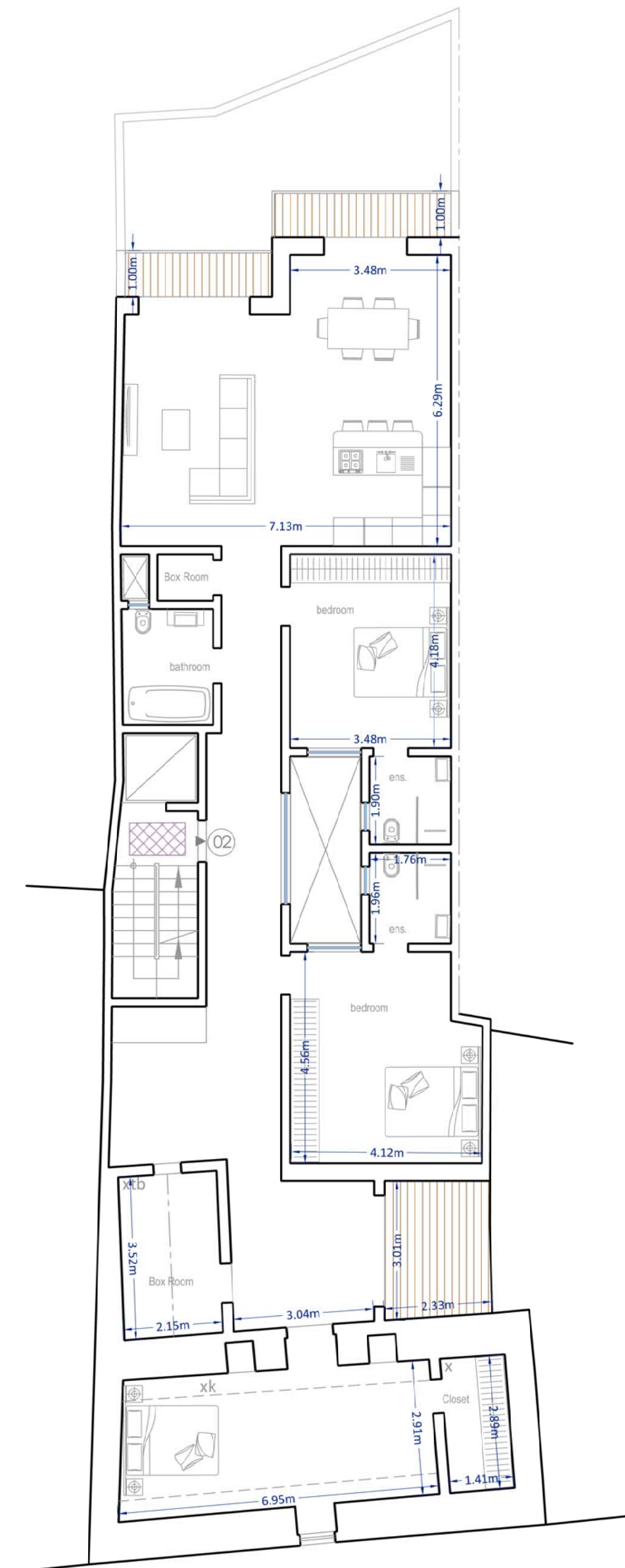
0 5 10 20mts



**Proposed Ground Floor Level**

scale 1:100

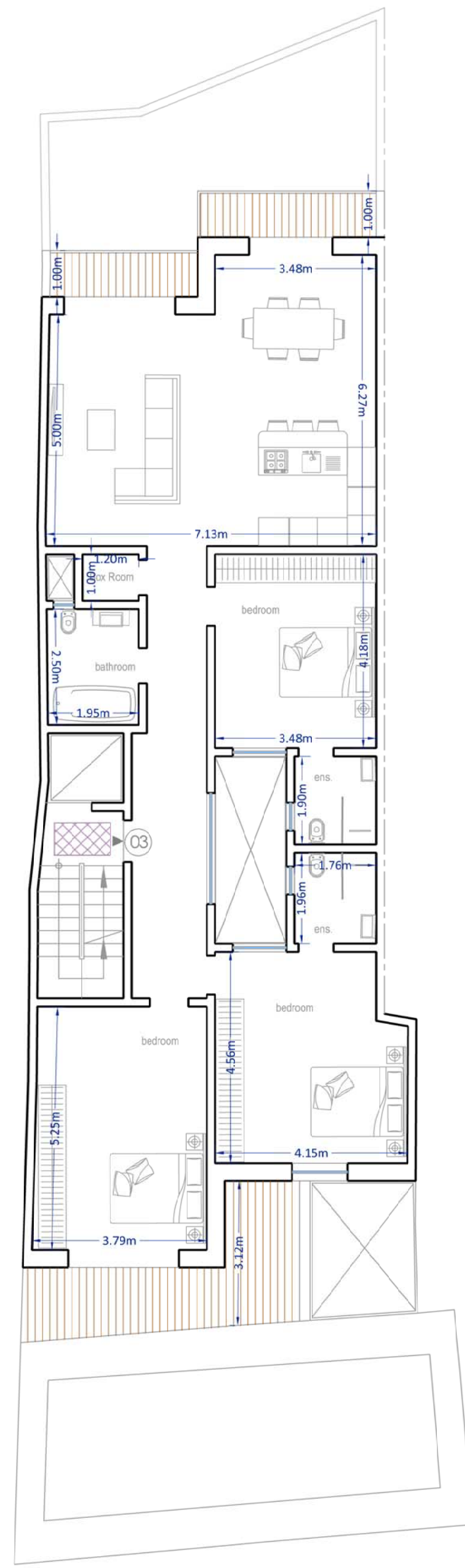
xa: roofed with xorok on arches



**Proposed First Floor Level**

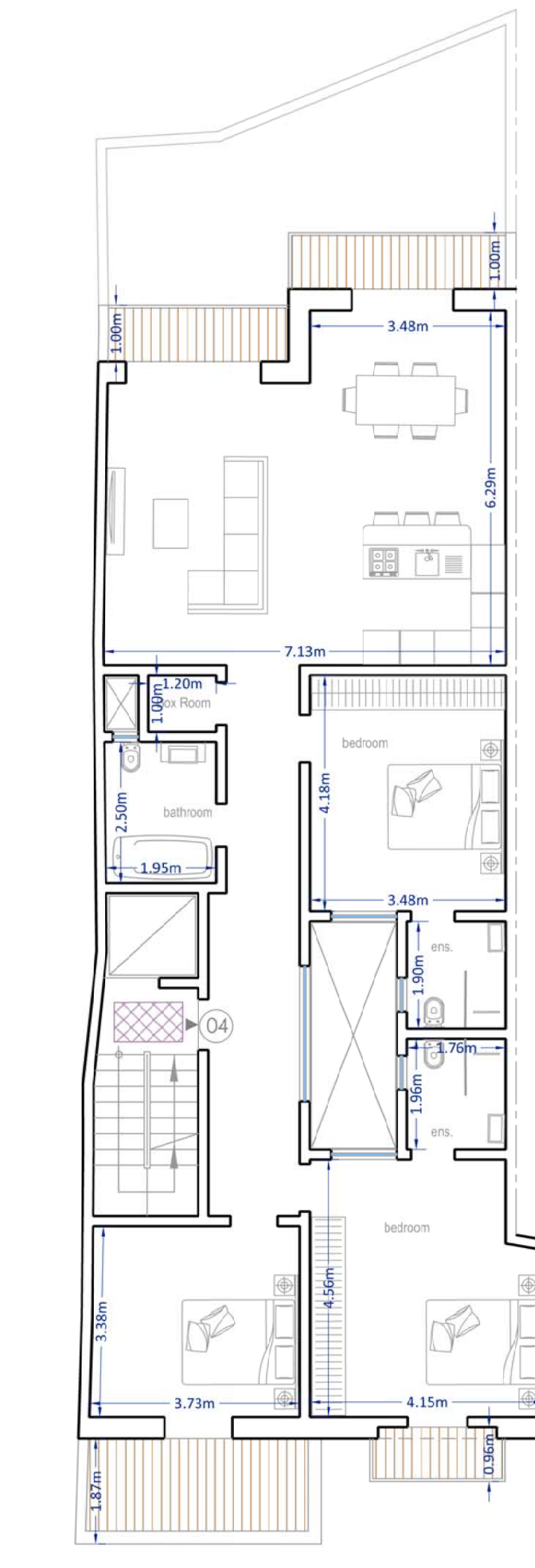
scale 1:100

x: roofed with xorok  
 xa: roofed with xorok on arches  
 xtb: roofed with xorok on timber beams  
 x: roofed with xorok on 'Kileb'



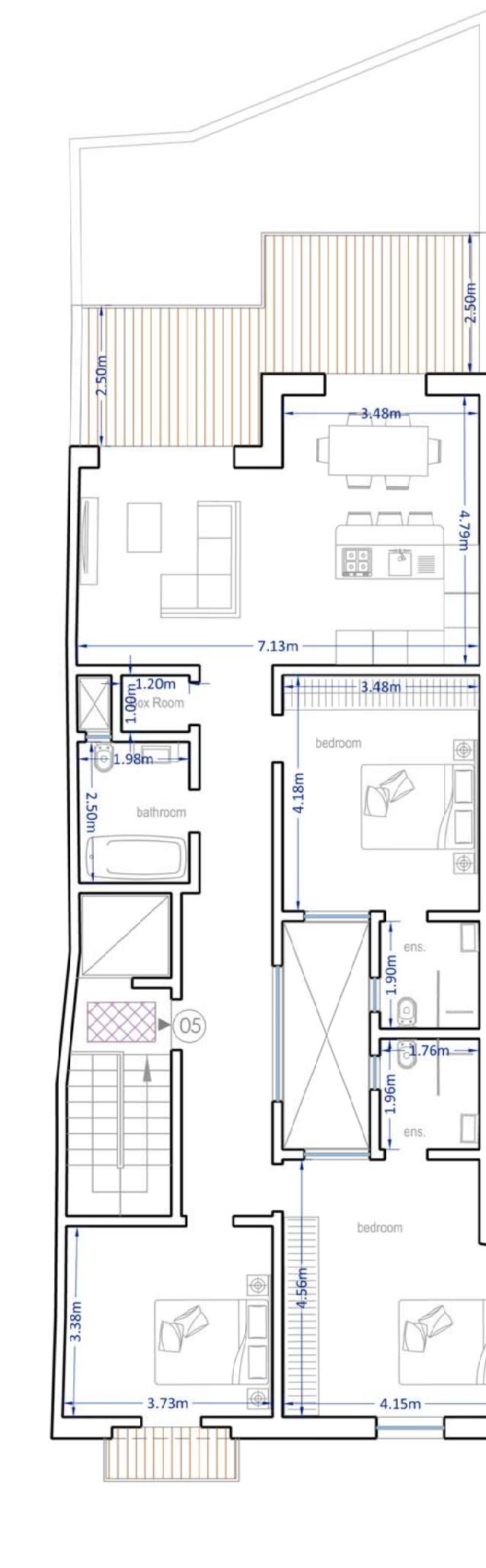
**Proposed Second Floor Level**

scale 1:100



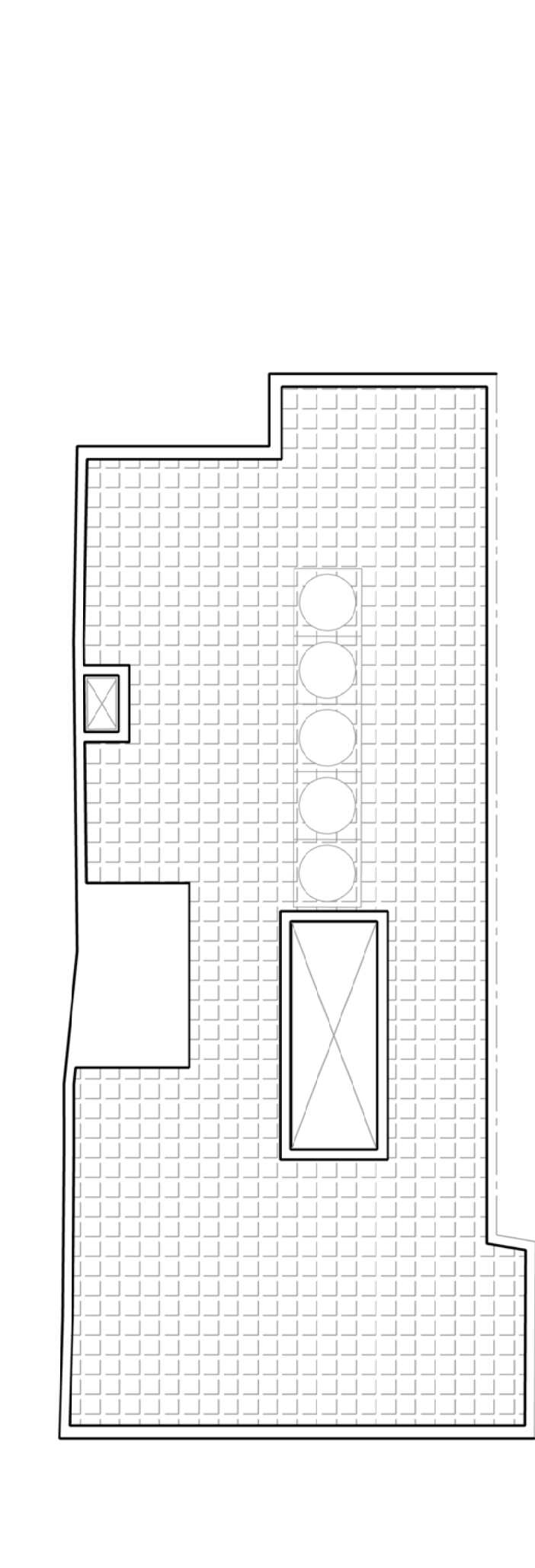
**Proposed Third Floor Level**

scale 1:100



**Proposed Penthouse Floor Level**

scale 1:100



**Proposed Roof Floor Level**

scale 1:100

Residence ID	No of Bed	Internal Area	External Area	Total GFA
Apt 01	2	169.20m <sup>2</sup>	36.45m <sup>2</sup>	205.65m <sup>2</sup>
Apt 02	3	194.95m <sup>2</sup>	14.05m <sup>2</sup>	209.00m <sup>2</sup>
Apt 03	3	137.10m <sup>2</sup>	18.90m <sup>2</sup>	156.00m <sup>2</sup>
Apt 04	3	129.35m <sup>2</sup>	17.65m <sup>2</sup>	147.00m <sup>2</sup>
Apt 05	3	118.45m <sup>2</sup>	20.55m <sup>2</sup>	139.00m <sup>2</sup>

REFERENCE	
PERIT	S. Micallef - Gozo
Int. Arch. Design	Mario B. Petracaro - Gozo
Referent Alteration	Mario B. Petracaro - Gozo
Revision	03-11-2022